



**Serving the Needs of Undocumented  
Students through CAW**

**Maria A. Martinez, Utah System of Higher Education**

*American College Application Campaign Convening | June 22, 2017*



UTAH SYSTEM OF HIGHER EDUCATION



### Research Institutions

- University of Utah
- Utah State University

### Regional Universities

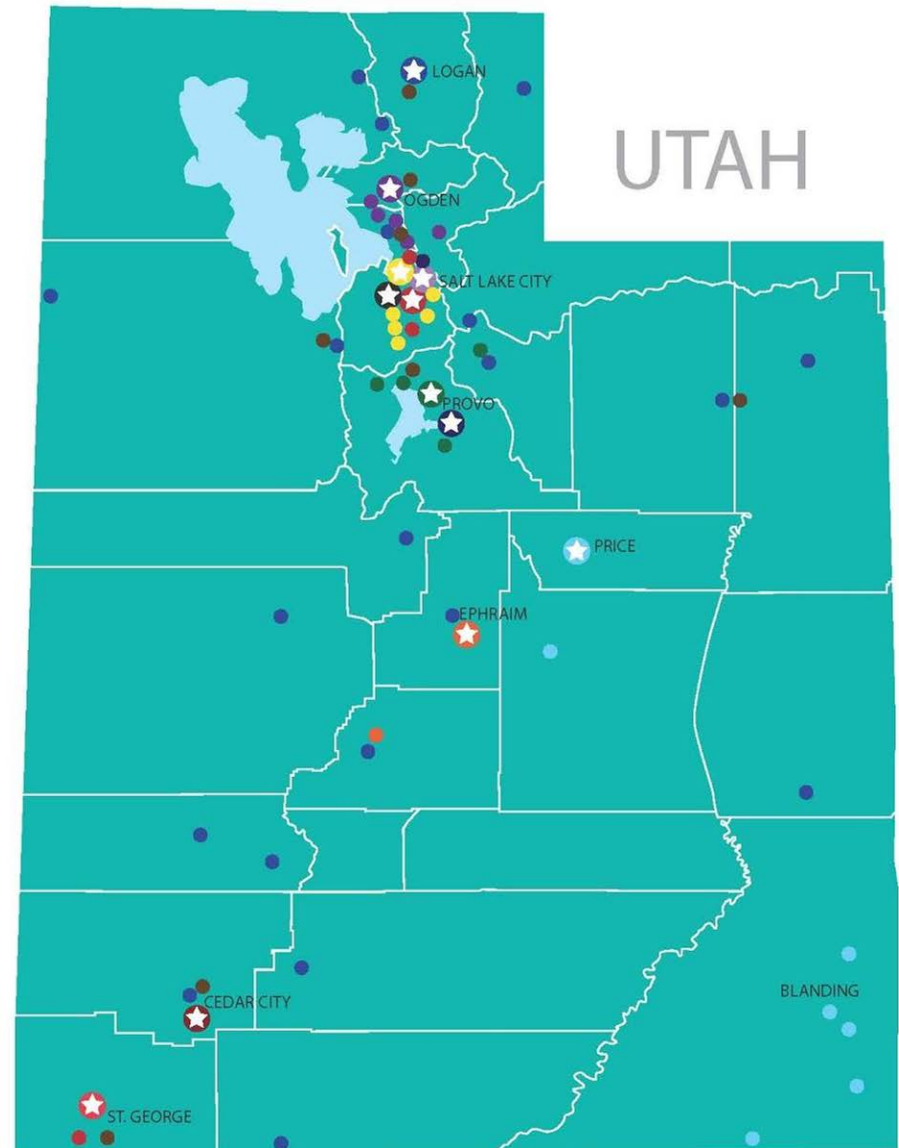
- Weber State University
- Utah Valley University
- Dixie State University
- Southern Utah University

### Community Colleges

- Salt Lake Community College
- Snow College

### Private not-for-profit

- Brigham Young University/LDS BC
- Westminster College





**120** school & community sites from **32** school districts

**19,519** student participants **25,365** applications

**84%** or more said that participating in UCAW:

- Increased their comfort level with the college application process (**90%**)
- Increased their likeliness to ask for help with college applications (**84%**)
- Increased their interest in going to college (**86%**)

**28%** identified as first generation students\*

**79%** are planning to submit a FAFSA



# COLLEGE ACCESS NETWORK OF UTAH

## **Mission Statement**

Support and strengthen programs and services that encourage the access and attainment of higher education for Utah's low-income, first generation, and historically underrepresented student populations, and supporting the goal of **66 percent of all Utahns to have a credential beyond high school by 2020**

## **CANU's Core Action Strategies**

- Advocacy
- Professional Development
- Partnership Development
- Resource Provider

**Working Groups:** College Readiness, Early Awareness & Outreach, Family & Community Engagement

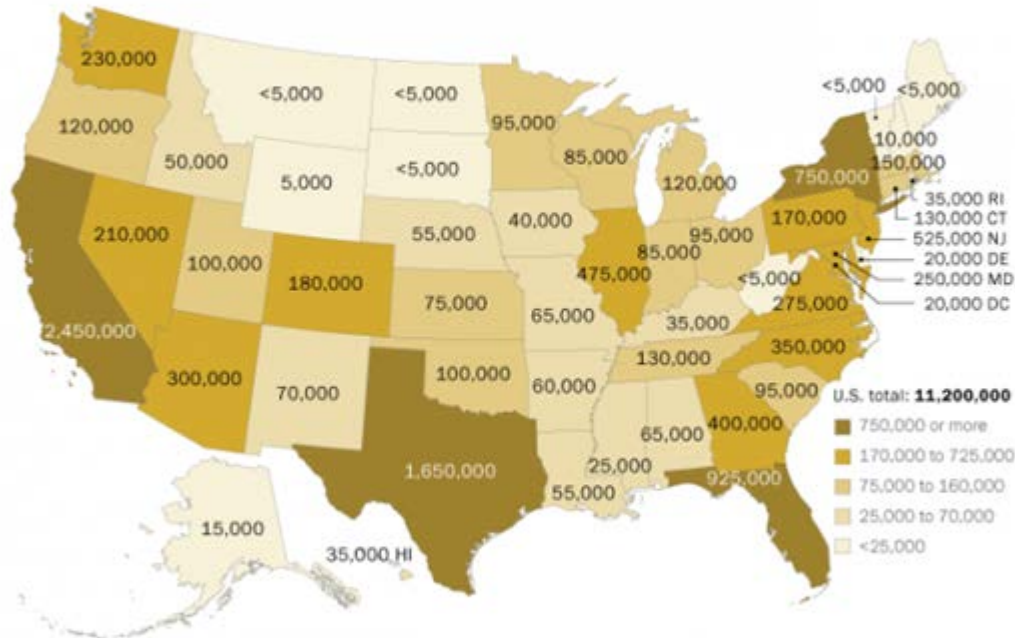




## Unauthorized Immigrant Population, by State, 2012

MAP B1

Unauthorized Immigrant Population, by State, 2012



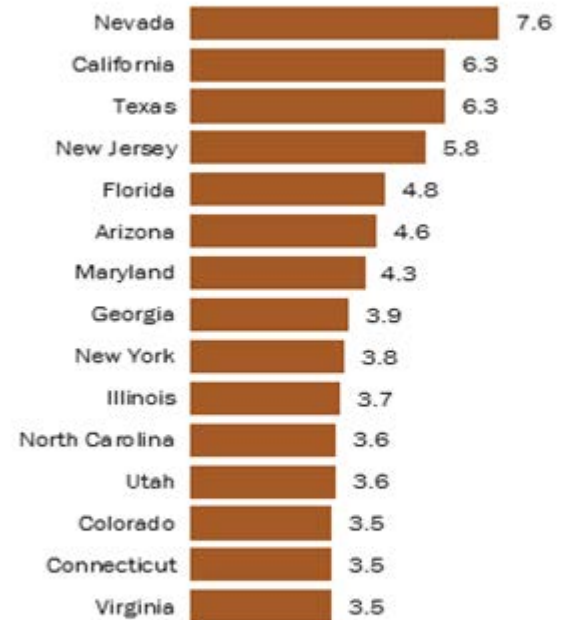
Note: Population figures are rounded.

Source: Pew Research Center estimates for 2012 based on augmented American Community Survey data from Integrated Public Use Microdata Series (IPUMS)

PEW RESEARCH CENTER

## States with Largest Shares of Unauthorized Immigrants in the Population, 2012

Unauthorized immigrants % of total state population



Note: Percentages calculated from unrounded numbers. Differences between consecutive ranks may not be statistically significant. States with the same shares are shown alphabetically.

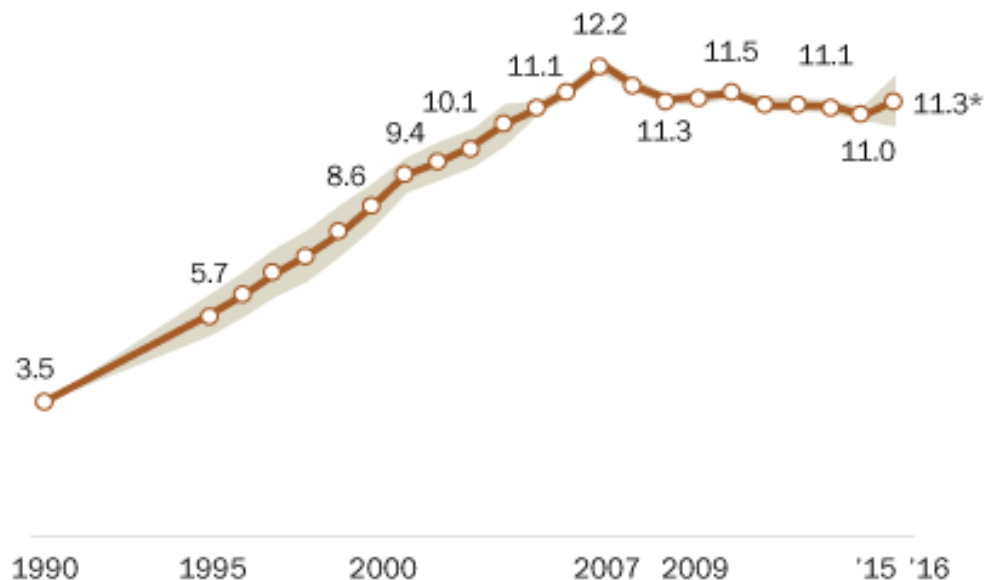
Source: Table A3, derived from Pew Research Center estimates based on augmented 2012 American Community Survey data from Integrated Public Use Microdata Series (IPUMS).

PEW RESEARCH CENTER

---

## Estimated unauthorized immigrant population in the U.S. lower in 2015 than in 2009

*In millions*



\*There is no statistically significant difference between the 2015 estimate and 2016 preliminary estimate.

Note: Shading surrounding line indicates low and high points of the estimated 90% confidence interval. The 2009-2016 change is not statistically significant at 90% confidence interval. Data labels are for 1990, 1995, 2000, 2001, 2003, 2005, 2007, 2009, 2011, 2014, 2015 and 2016.

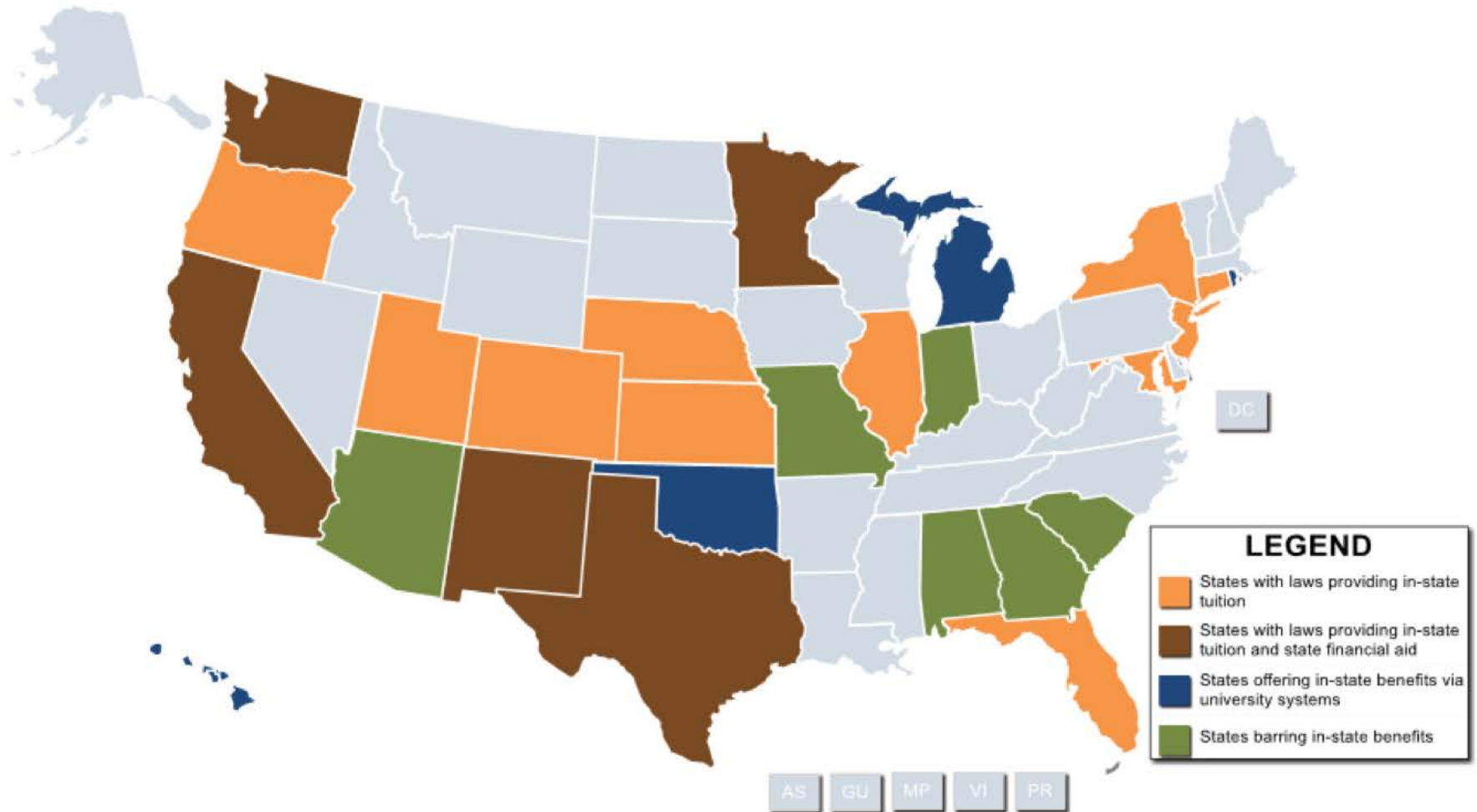
Source: Pew Research Center estimates for 2005-2015 based on augmented American Community Survey data (IPUMS); for 2016 and 1995-2004 based on March Supplements of the Current Population Survey. Estimates for 1990 from Warren and Warren (2013).

PEW RESEARCH CENTER

---



# U.S. States with In-State Tuition Benefits:



# COLLEGE ACCESS NETWORK OF UTAH

**The Undocumented Student Access and Success Committee's** vision is to create educational equity for undocumented students statewide. We seek to collaborate with K-16 partners to eradicate institutional barriers and achieve the same access and resources for undocumented students to higher education as their documented peers.





# Undoc. Working Group

Outlined the barriers

Set goals and action items with target dates

Created long term goals and pipe dreams:

- Statewide scholarship endowment
- Hotline


Started with low-hanging fruit:

- Removing notarization on tuition waiver
- Institutional resources matrix
- Statewide training/online Canvas course



## Higher Education Resources for Utah's Undocumented Students

Institution	Website Specific to Undocumented Students	How to fill out the Admissions Application	Link to HB 144 Waiver & where to submit <small>*Waivers need to be submitted with an official high school transcript indicating graduation.</small>	Contact 1
Brigham Young University & LDS Business College	<a href="http://admissions.byu.edu/international-acceptance-criteria">admissions.byu.edu/international-acceptance-criteria</a>	Leave SSN field blank. Asks for home country, option to enter if you are a permanent resident (with a green card #), an international applicant, or neither.	HB144 does not apply to BYU/LDS BC since they are private schools. Tuition based on member/non-member price	BYU - Admissions Office, 801-422-2507 LDS BC - Admissions Office, 801-524-8145 or <a href="mailto:admissions@ldsbc.edu">admissions@ldsbc.edu</a>
Dixie State University		If a student has a work authorization number they can use that number for the SSN. If the student does not have a SSN they should enter 999999999 in the SSN field.	Link: <a href="http://dixie.edu/reg/forms/affidavit-non-res.pdf">dixie.edu/reg/forms/affidavit-non-res.pdf</a> Submit: Admissions Office	Laralee Davenport, Asst. Director of Admissions 435-652-7698 <a href="mailto:ldavenport@dixie.edu">ldavenport@dixie.edu</a>
Salt Lake Community College	<a href="http://slcc.edu/undocumented">slcc.edu/undocumented</a>	<ul style="list-style-type: none"> <li>• SSN not required in order to continue with online application. Check the box, "I don't have one" next to the SSN section.</li> <li>• SLCC asks for a Utah Driver License number or a Utah State ID number on the admission application. Please note a Utah Driving Privilege Card is not a Utah Driver License (Limited term DL under DACA are considered a valid DL/State ID). If you don't have a Utah Driver License or Utah State ID number, indicate "No" on the application.</li> </ul>	Link: <a href="http://slcc.edu/enrollmentservices/docs/Residency_Affidavit.pdf">slcc.edu/enrollmentservices/docs/Residency_Affidavit.pdf</a> Submit: Admissions	Miguel Nieto-Palma, Advisor, Student Recruitment 801-957-3912 <a href="mailto:miguel.nieto-palma@slcc.edu">miguel.nieto-palma@slcc.edu</a>
Snow College	<a href="http://snow.edu/offices/registrar/residency/hb144.html">snow.edu/offices/registrar/residency/hb144.html</a>	Input Zeroes in the SSN field	Link: <a href="http://snow.edu/welcome/admissions/hb144.html">snow.edu/welcome/admissions/hb144.html</a> Submit: Admissions Office Link: <a href="https://www.suu.edu/finaid/pdf/hb144-waiver-and-procedure.pdf">https://www.suu.edu/finaid/pdf/hb144-waiver-and-procedure.pdf</a>	Fernando Montano, Director of Diversity and Inclusion 435-282-7228 <a href="mailto:montano@snow.edu">montano@snow.edu</a>

 FortiClient [montano@snow.edu](mailto:montano@snow.edu)

A new version of FortiClient (ver: 5.4.2) is available. Click here to update now.



## Higher Education Resources for Utah's Undocumented Students

Institution	Contact 2	Payment Plan & Instructions	Exception to policies, alternatives and/or strategies for students who may not qualify for HB 144	Concurrent Enrollment
<b>Brigham Young University &amp; LDS Business College</b>	BYU - Admissions Office, 801-422-2507 LDS BC - Admissions Office, 801-524-8145 or admissions@ldsbc.edu	LDS BC - Only DACA eligible students are eligible for a payment plan.	LDS BC - students who take 12 or more credits on or after 4PM are eligible for a \$500 evening scholarship/discount (must apply, not automatic.) Also, LEAP/Early Access Semester allows for three free courses. Contact Admissions for info.	
<b>Dixie State University</b>	Daneka-Souberbielle, Director of Intercultural Engagement 435-652-7735 Souberbielle@dixie.edu	Name: Installment Plan Website: <a href="http://dixie.edu/registration/?page=tuition">dixie.edu/registration/?page=tuition</a>	All students pay resident tuition during the Summer, regardless of residency status.	<a href="http://new.dixie.edu/concurrent/">new.dixie.edu/concurrent/</a>
<b>Salt Lake Community College</b>	Tania Mancilla, Advisor, College Recruitment 801-957-2125 tania.mancilla@slcc.edu	Name: Semester Tuition Installment Loan (STIL) Website: <a href="http://slcc.edu/ar/stil.aspx">slcc.edu/ar/stil.aspx</a>	All students pay resident tuition during the Summer, regardless of residency status. All student pay resident tuition for the School of Applied Technology programs, regardless of residency status.	<a href="http://slcc.edu/concurrentenrollment">slcc.edu/concurrentenrollment</a>
<b>Snow College</b>	Sinapati Moe, Diversity Advisor 435-283-7658 sinapati.moe@snow.edu	<a href="http://snow.edu/finaid/semesterplan.html">snow.edu/finaid/semesterplan.html</a>	All students pay resident tuition during the Summer, regardless of residency status.	<a href="http://snow.edu/ce/">snow.edu/ce/</a>



SLCC / UNDOCUMENTED STUDENT RESOURCES

# UNDOCUMENTED STUDENT RESOURCES

- Home
- Staff Directory
- FAQ
- Resources
- Scholarships

## WELCOME SLCC STUDENTS OR POTENTIAL STUDENTS!

We understand entering college can be confusing! We hope this website helps you and your family feel welcome and more aware of the resources available to you at Salt Lake Community College.



## ADMISSIONS

- STEPS TO APPLY
- DEADLINES
- CONTACT US
- GENERAL INFO
- RESIDENCY
- PARENTS

# Undocumented Student Resources

Home / Campus Life / Diversity and Inclusion / Undocumented Student Resources

## HB 144

### What is HB 144?

In 2002, the Utah legislature passed House Bill 144 (HB-144). This legislation allows qualifying undocumented students DO NOT qualify for official residency for tuition purposes, but they can qualify for the tuition waiver. The affidavit that states they attended a Utah high school for three years, graduated with a diploma or GED, and that they are eligible to do so.

### How Do I Qualify for HB 144?

## Message from President Steve Morgan



- Beacon
- Define Your Path
- Dream Center
- Education Pathways
- Student Organizations
- UCAC

### Office of Engagement



### Mission

The Dream Center at the University of Utah Office of Engagement works holistically with undocumented students and their families from college access to graduation. The Dream Center (1) engages in specialized college outreach and access strategies, (2) provides individualized mentoring and scholarship support for current and future University of Utah undocumented students, (3) promotes campus-wide advocacy and trainings for University of Utah students, faculty, staff and administration, and (4) increases community-wide awareness of policies affecting current and future University of Utah undocumented students.

### Definitions

Dreamer(s) is an inclusive term for undocumented students with and without Deferred Action for



- Beacon Scholars
- Define Your Path
- Dream Center
- Education Pathways
- Student Organization
- Utah College Advising Corps
- Engagement Home

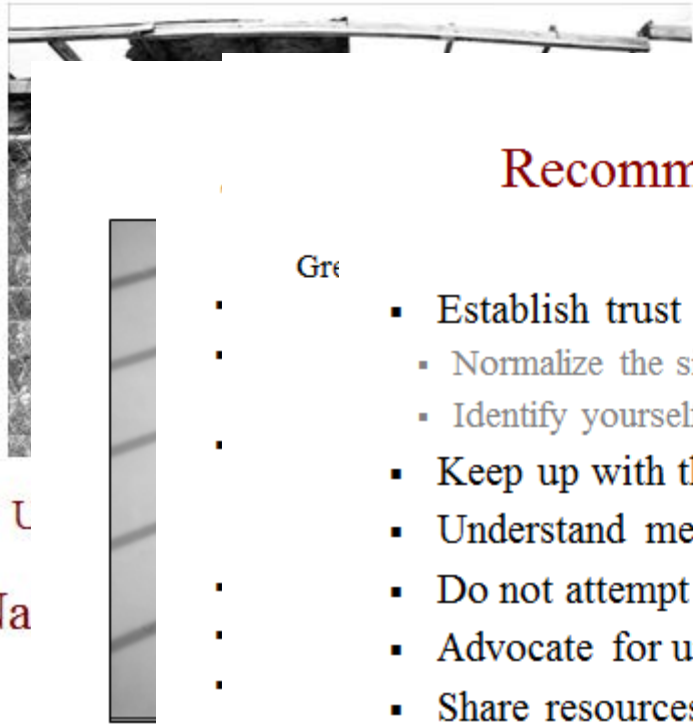


# Statewide Training

Undocu

- The 1 indivi
- Enter fraud
- Enter violat unaut
- Deter U

Na



## Recommendations for Best Practices

Gre

- Establish trust
  - Normalize the situation
  - Identify yourself as an ally
- Keep up with the latest research and literature
- Understand mental health concerns
- Do not attempt to offer legal advice
- Advocate for undocumented students' success
- Share resources



# Online Canvas Course

- Partnership with Utah State Board of Education (USBE), PD credit
- Leveraged Learning Management System:
  - Moodle
  - BlackBoard
  - \*CANVAS\*
- Instructional Design Training





# Live Demonstration

Home

Assignments

Discussions

Grades

People

Pages

Files

Syllabus

Quizzes

Modules

Conferences

Collaborations

## Higher Education for Utah's Undocumented Students



### Undocumented Students and their Pursuit of Higher Education in Utah

A training made possible by the College Access Network of Utah's (CANU) Undocumented Student Access and Success Committee.

If you are new to the course, start with the [INTRODUCTION](#).

If you have already begun the course, click [HERE](#) and pick up where you left off.





# Training - Design Principles

Each module has one assignment and an accompanying evaluation rubric:

- Discussions posts and responses
- Readings and responding to prompts about the readings
- Reflections on the content presented

Each module has a way of assessing learning:

- Short essay (case study, prompts, reflection, etc.)
- Quiz

Each module should take about **30 to 40 minutes** to complete and have an “Additional Resources” page

Next step: institutions incorporating into their institution



# Replicating in your states

Are you aware of your state's policies?

Are your counselors aware?

Does your state have a college access network and is this topic on their radar?

Do your institutions have working groups focused on undocumented student support?

Do you have any resources for counselors and/or undoc. students?

Does your CAW training included training/resources for counselors on undocumented students issues?

Next steps...



**Maria Martinez**

**[mmartinez@ushe.edu](mailto:mmartinez@ushe.edu)**

**801-366-8454**