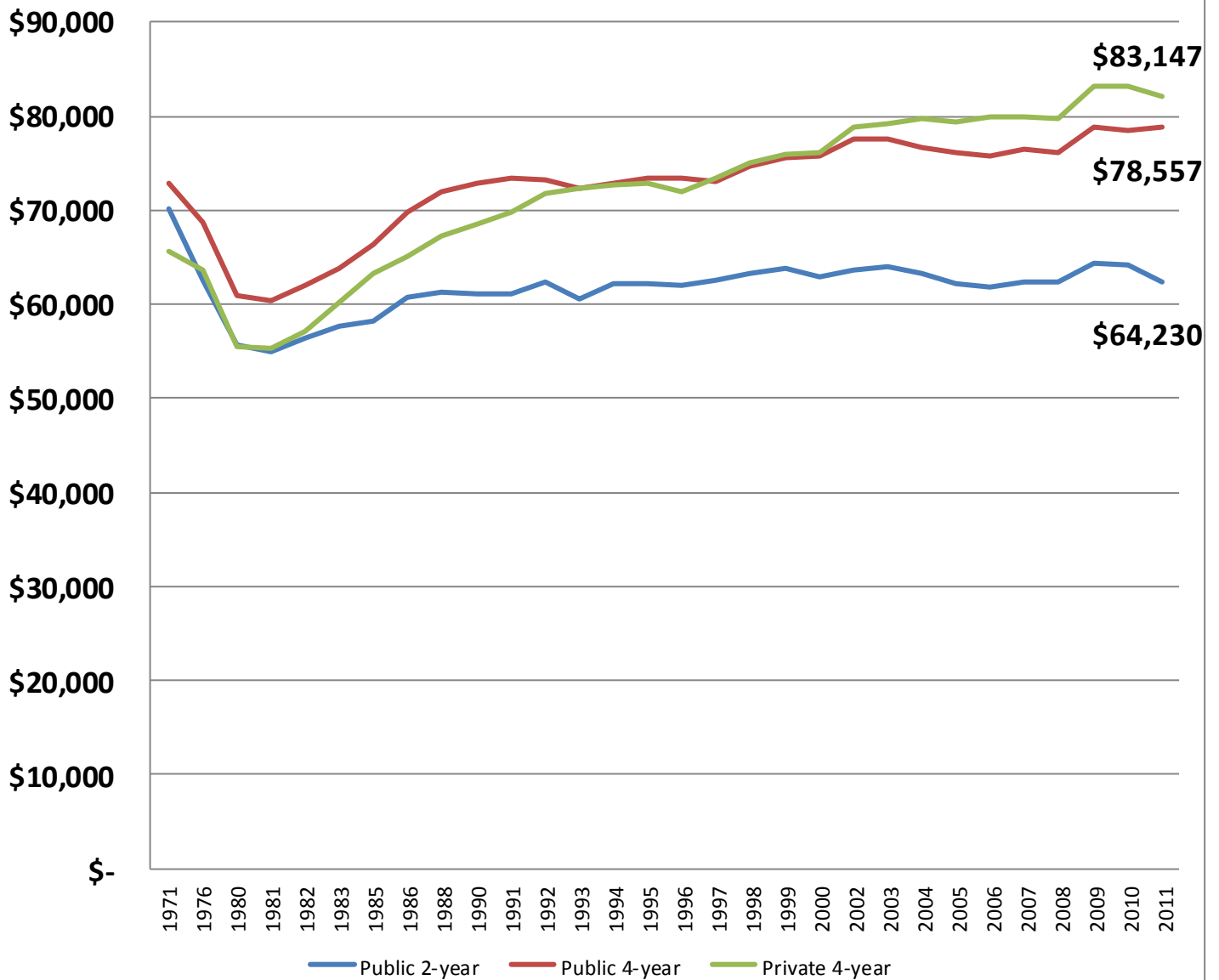




# Fact Sheet

## On Higher Education

**Average Salary of Full-Time Instructional Faculty on 9-Month Contracts, in Constant 2011 Dollars, by Type of Institution, 1971-2011**



Source: U.S Department of Education, National Center for Education Statistics, Digest of Education Statistics 2011

## SALARY BY INSTITUTION TYPE

Salary (\$) (Adjusted for Inflation, 2011 Dollars)

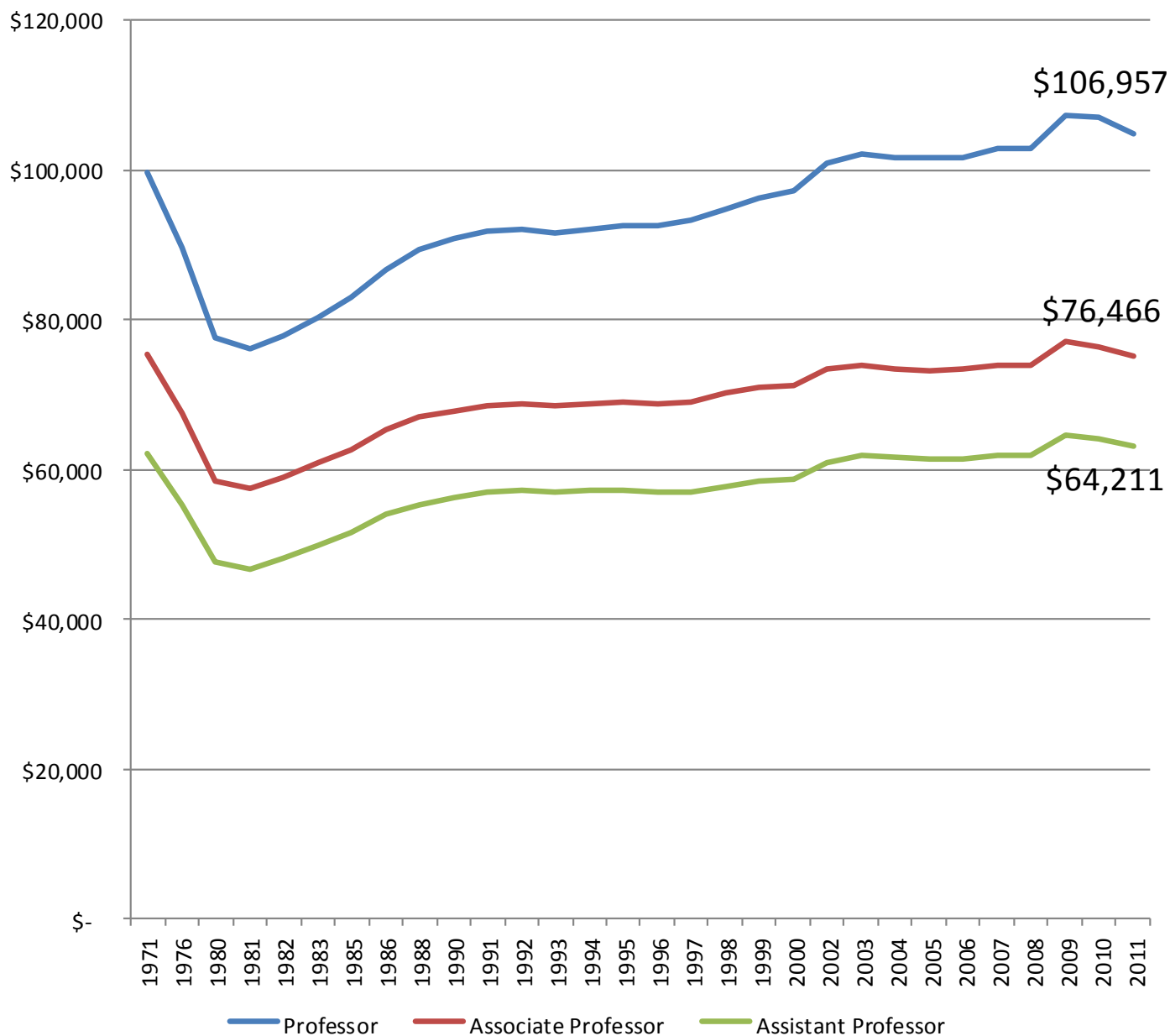
	Public 2-year	Public 4-year	Private 4-year
1971	\$ 70,225	\$ 72,875	\$ 65,671
1976	\$ 62,540	\$ 68,786	\$ 63,710
1980	\$ 55,768	\$ 61,009	\$ 55,465
1981	\$ 54,879	\$ 60,313	\$ 55,245
1982	\$ 56,393	\$ 61,983	\$ 57,130
1983	\$ 57,741	\$ 63,898	\$ 60,280
1985	\$ 58,250	\$ 66,403	\$ 63,232
1986	\$ 60,729	\$ 69,848	\$ 65,126
1988	\$ 61,243	\$ 71,950	\$ 67,208
1990	\$ 61,124	\$ 72,912	\$ 68,526
1991	\$ 61,198	\$ 73,510	\$ 69,734
1992	\$ 62,462	\$ 73,170	\$ 71,815
1993	\$ 60,609	\$ 72,409	\$ 72,272
1994	\$ 62,291	\$ 72,884	\$ 72,673
1995	\$ 62,140	\$ 73,412	\$ 72,882
1996	\$ 62,070	\$ 73,363	\$ 71,953
1997	\$ 62,484	\$ 73,127	\$ 73,498
1998	\$ 63,368	\$ 74,677	\$ 75,043
1999	\$ 63,843	\$ 75,540	\$ 75,993
2000	\$ 63,014	\$ 75,698	\$ 76,185
2002	\$ 63,564	\$ 77,538	\$ 78,882
2003	\$ 63,973	\$ 77,611	\$ 79,235
2004	\$ 63,202	\$ 76,615	\$ 79,702
2005	\$ 62,117	\$ 76,077	\$ 79,466
2006	\$ 61,819	\$ 75,818	\$ 79,915
2007	\$ 62,343	\$ 76,440	\$ 79,885
2008	\$ 62,315	\$ 76,118	\$ 79,758
2009	\$ 64,412	\$ 78,893	\$ 83,260
2010	\$ 64,230	\$ 78,557	\$ 83,147
2011	\$ 62,301	\$ 78,861	\$ 82,094



# Fact Sheet

## On Higher Education

### Average Salary of Full-Time Instructional Faculty on 9-Month Contracts, In Constant 2011 Dollars, by Academic Rank, 1970-2011



Source: U.S Department of Education, National Center for Education Statistics, Digest of Education Statistics 2011

## SALARY BY INSTITUTION TYPE

Salary (\$) (Adjusted for Inflation, 2011 Dollars)

	Professor	Associate Professor	Assistant Professor
1971	\$ 99,737	\$ 75,332	\$ 62,072
1976	\$ 89,537	\$ 67,463	\$ 55,290
1980	\$ 77,496	\$ 58,557	\$ 47,677
1981	\$ 76,101	\$ 57,445	\$ 46,772
1982	\$ 77,941	\$ 58,922	\$ 48,037
1983	\$ 80,264	\$ 60,799	\$ 49,812
1985	\$ 83,083	\$ 62,600	\$ 51,569
1986	\$ 86,749	\$ 65,238	\$ 53,930
1988	\$ 89,443	\$ 66,989	\$ 55,351
1990	\$ 90,887	\$ 67,795	\$ 56,259
1991	\$ 91,726	\$ 68,396	\$ 56,869
1992	\$ 92,080	\$ 68,826	\$ 57,310
1993	\$ 91,513	\$ 68,407	\$ 57,013
1994	\$ 92,054	\$ 68,723	\$ 57,115
1995	\$ 92,556	\$ 68,948	\$ 57,203
1996	\$ 92,528	\$ 68,766	\$ 56,911
1997	\$ 93,422	\$ 69,104	\$ 57,022
1998	\$ 94,849	\$ 70,142	\$ 57,725
1999	\$ 96,298	\$ 70,986	\$ 58,528
2000	\$ 97,200	\$ 71,222	\$ 58,754
2002	\$ 101,019	\$ 73,426	\$ 61,012
2003	\$ 102,037	\$ 73,925	\$ 61,800
2004	\$ 101,614	\$ 73,526	\$ 61,680
2005	\$ 101,537	\$ 73,204	\$ 61,398
2006	\$ 101,767	\$ 73,322	\$ 61,485
2007	\$ 102,921	\$ 73,937	\$ 61,992
2008	\$ 102,959	\$ 73,996	\$ 61,948
2009	\$ 107,308	\$ 77,000	\$ 64,534
2010	\$ 106,957	\$ 76,466	\$ 64,211
2011	\$ 104,957	\$ 75,103	\$ 63,140