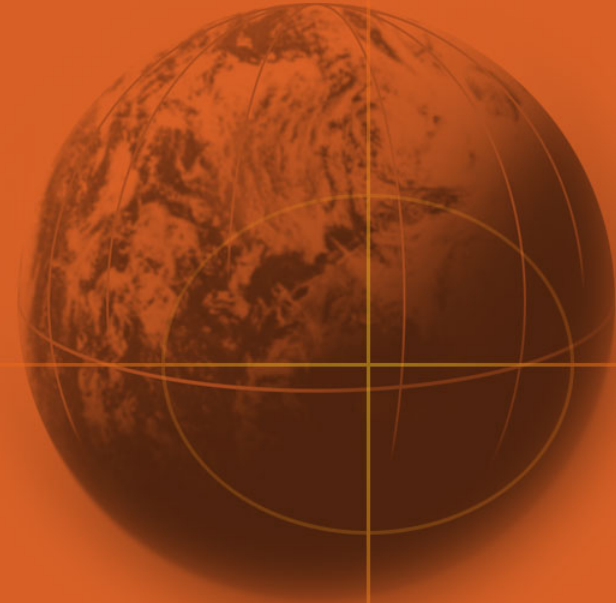




David Jan Cowan, Ph.D.
Design and Communication Technology Program
Indiana University Purdue University Indianapolis

IUPUI



Global Design Studio



OUTLINE



1. What is Global Design Studio?
2. The Design Continuum as a Structural Framework for International Collaborations
3. Specific Site Applications:
Post- Disaster: Bantul, Java, Indonesia
Broadmoor/Algiers Communities: New Orleans, LA



Global Design Studio

Service Learning with a Global Perspective

[GDS Home](#) | [Contact](#) | [Participants](#) | [Projects](#) | [Clients](#) | [News](#)

Global Design Studio (GDS) is a student-centered distance learning environment at the secondary and post secondary levels. It has been in operation since the fall of 2004 and has primarily focused on design projects that affect the built environment. Recently, many of these projects have been humanitarian-based and the result of natural disasters. The services provided by Global Design Studio are thus orientated to real-world projects completed by international teams of students that are guided by faculty and industry professionals. The goals of GDS include:



- To expose students to design problems set within different international contexts.
- To provide students with the opportunity to work within and learn from multi-disciplinary international teams.
- To develop a multi-directional international exchange of design knowledge that is dispensed through contemporary media.
- To provide design expertise to individuals and communities in need.

[GDS Home](#) | [Contact](#) | [Participants](#) | [Projects](#) | [Clients](#) | [News](#)



Global Design Studio

Service Learning with a Global Perspective

[Home](#) | [About GDS](#) | [Schools](#) | [Projects](#)

Student Projects

- 2006
 - Commercial
 - U.S.A.
 - Canada
 - Indonesia
 - Residential
 - U.S.A.
 - IUPUI
 - Canada
 - Indonesia
- 2005
- 2004

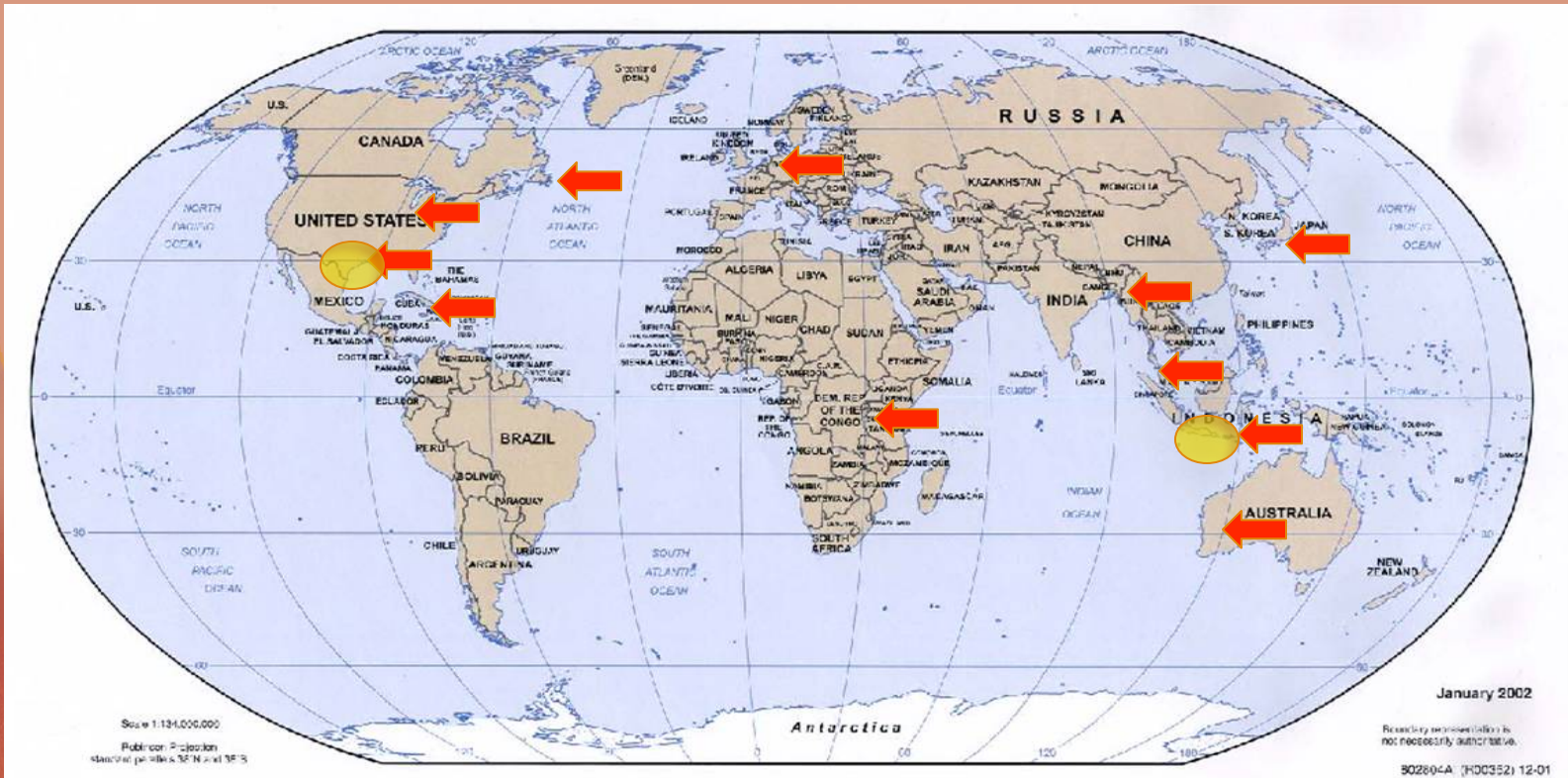


STUDENT PROJECTS

Student projects can be viewed by navigating the left sidebar. Interior, commercial, and residential design elements are showcased in the student projects. Images are posted so that students at the participating schools may conveniently share ideas and concepts. Projects are divided by year, and then subdivided by commercial/residential, country, and school.



Footprint: Global Design Studio



Connecting: People and Expertise



Engaged/Immersive/Experiential



In-Country



Video-Conferencing



In-Community Meetings

Multi-Disciplines in Community Design



**Social Work
Education
Engineering
Urban Studies
Theatre
Visual Arts
Journalism**



Broad Based Ownership

**Medical
Arts and Sciences
Physical Education**

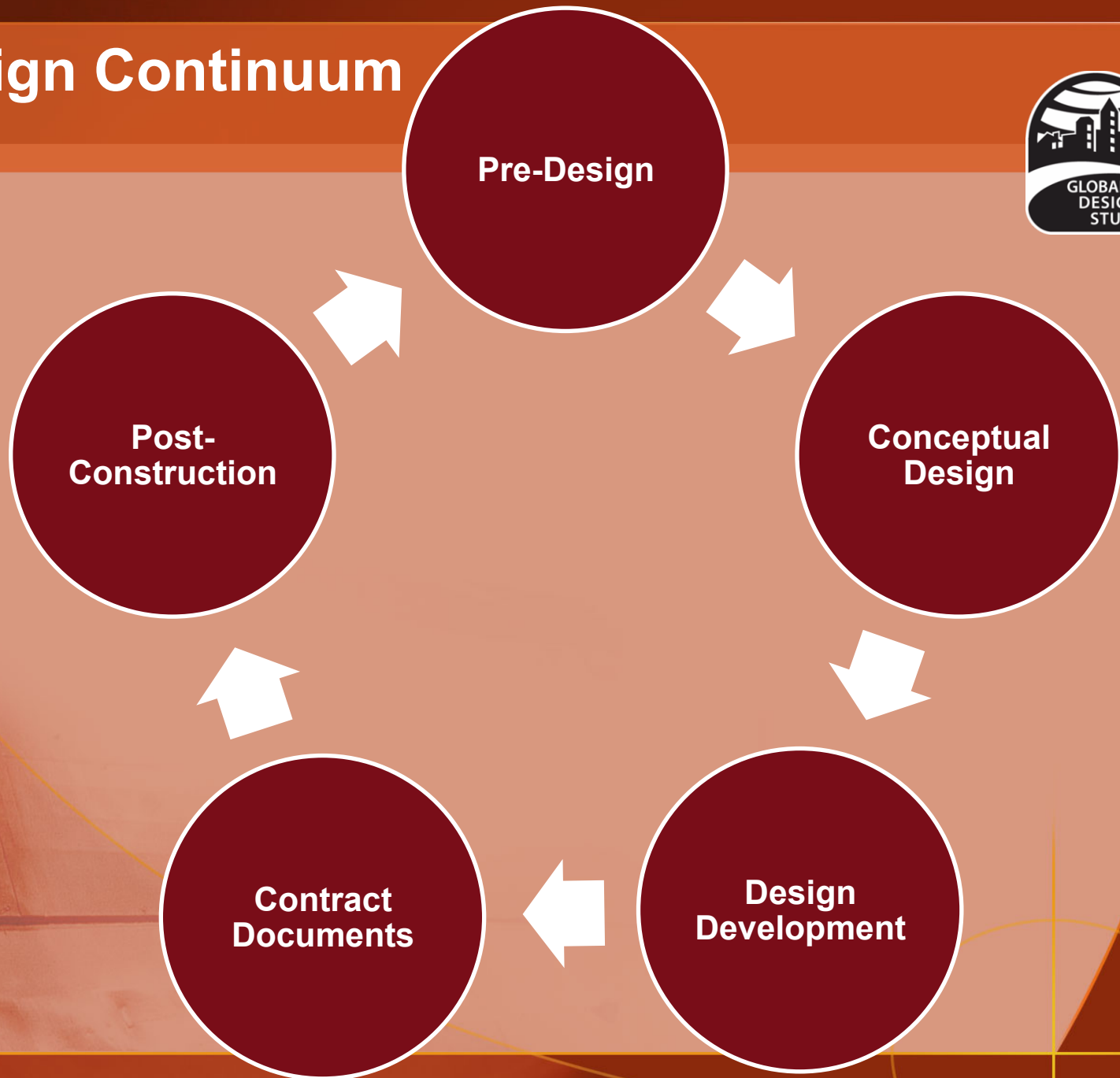
...



The Design Continuum



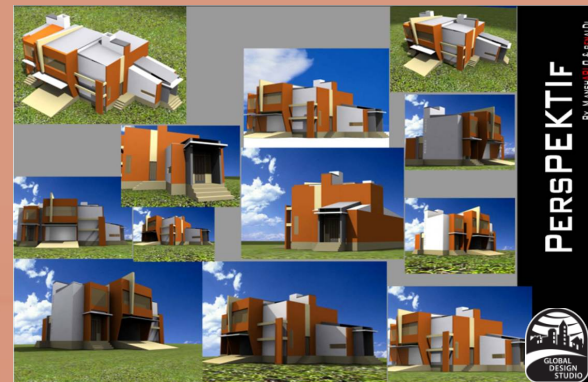
Design Continuum



Pre-Design



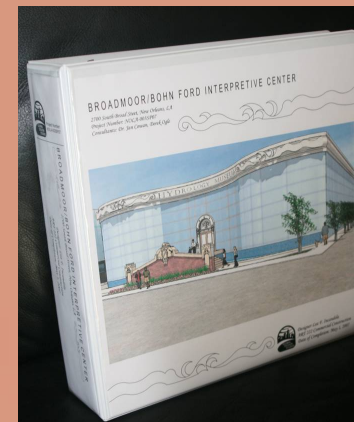
- **Branding (Business Cards, Shirts, Projects)**



Contract Documents



- Legal/Contract Responsibilities
- Accurate Reporting
- Student Binders
- Deliverables
- Pattern Books



Post-Design/Construction

- Post Surveys (Students and Client-Satisfaction)
- Reflection Activities
- Marketing
- Gather New Opportunities
- Sub-Contracting (St. Lucia Project)
- Presentations



Global Design Studio
Design and Communication
Technology Department

GLOBAL DESIGN STUDIO

It is a student centered, distance learning environment at the secondary and post-secondary levels. It has been in operation since the fall of 2004 and has primarily focused on design projects that affect the built environment. Recently, many of these projects have been humanitarian-based and the result of natural disasters. The services provided by Global Design Studio are thus centered on regional projects completed by international teams of students that are guided by faculty and industry professionals.

THE GOALS OF GDS

- To expose students to design problems seen within different international contexts.
- To provide students with the opportunity to work with and learn from multi-disciplinary international teams.
- To develop a multi-directional, international exchange of design knowledge that is disseminated through contemporary media.
- To provide design expertise to individuals and communities in need.

INTERNATIONAL PARTNERS

To date, Global Design Studio has partnered with institutions around the world, allowing students to work with offices in Canada and Indonesia. It will soon include students from Australia, Thailand, Africa and Europe. Students have been fortunate to work in projects in Canada, the Caribbean, Thailand, New Orleans, Indiana, Indonesia and Ohio. All of these have been projects with real clients and real buildings.

PROJECTS

Global Design Studio Projects have taken students on a journey to many countries. We have helped design residential, commercial and institutional buildings for communities and individuals in need. GDS projects also include urban design, graphic design, civil engineering, and journalism. It is more than just a list of the disciplines; it is a need to rebuild global communities.

Global Design Studio
Service Learning with Architecture

IUPUI





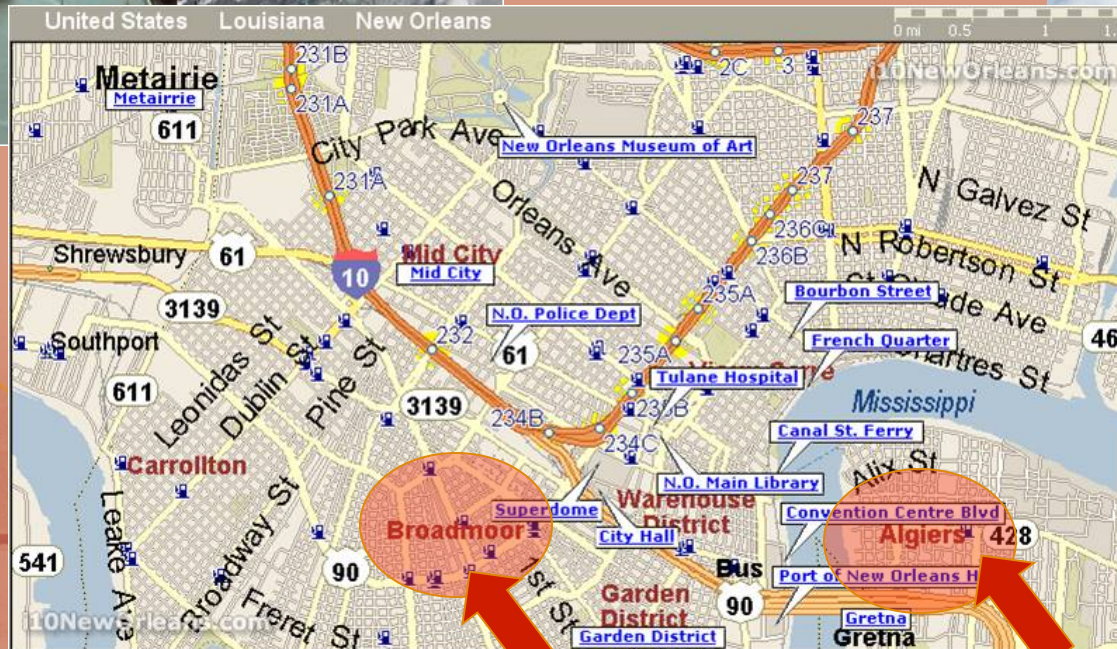
Specific Site Applications



New Orleans: Broadmoor and Algiers



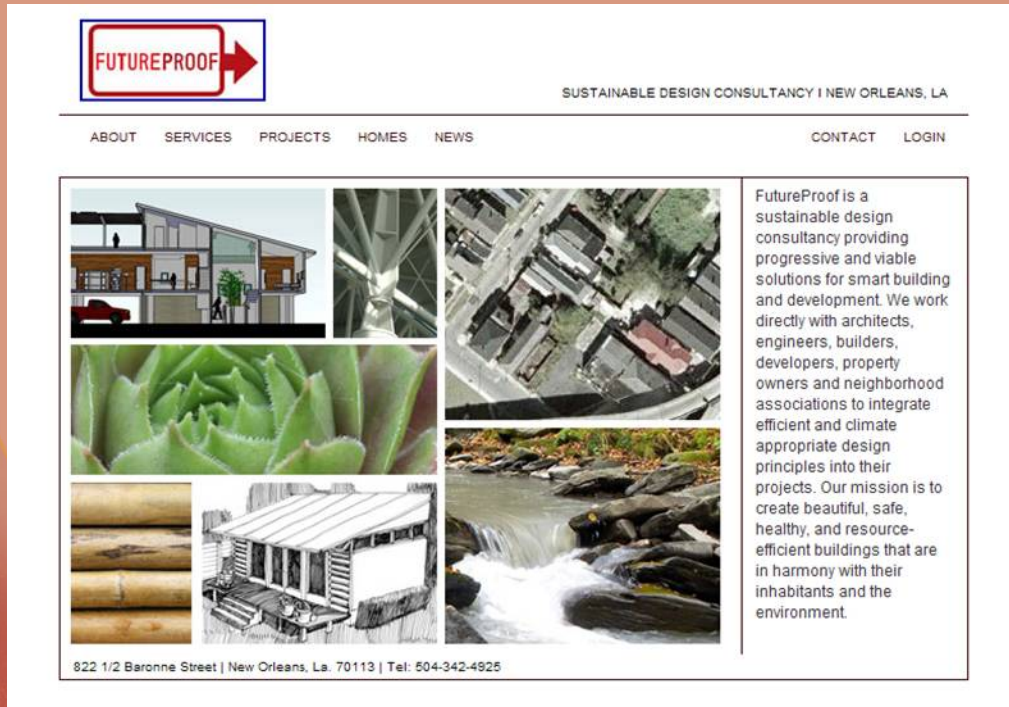
Katrina Hurricane 2005, NEW ORLEANS



Multi-Disciplinary Opportunities




Local Industry Partners



FUTUREPROOF →

SUSTAINABLE DESIGN CONSULTANCY | NEW ORLEANS, LA

ABOUT SERVICES PROJECTS HOMES NEWS CONTACT LOGIN



FutureProof is a sustainable design consultancy providing progressive and viable solutions for smart building and development. We work directly with architects, engineers, builders, developers, property owners and neighborhood associations to integrate efficient and climate appropriate design principles into their projects. Our mission is to create beautiful, safe, healthy, and resource-efficient buildings that are in harmony with their inhabitants and the environment.

822 1/2 Baronne Street | New Orleans, La. 70113 | Tel: 504-342-4925

Pre and Post Quality Control



Current Projects: Broadmoor



floor plan



The Toledano : Sidehall

Features:

- 1360 interior square feet
- 200 porch square feet
- 3 bedrooms
- 2 bathrooms
- open living spaces
- ventilated storage attic
- central air conditioning
- front & back porches
- high ceilings
- lots of windows
- industrially equipped kitchen
- plentiful closet space
- passive geothermal cooling
- energy efficient systems

Partnership Amenities



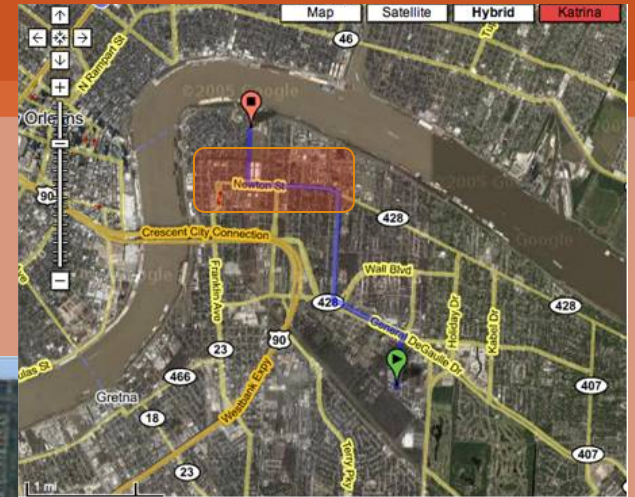
Dormitories



Resource Centers



Algiers: Main Street



JAVA, INDONESIA



5,778 deaths
37,883 people injured
139,859 houses destroyed
468,149 houses damaged
2.7 million people affected.

10 KILOMETERS FROM JOGJA
MAY 27TH, 2006 EARTHQUAKE
JUNE 25TH, 2006: VISIT

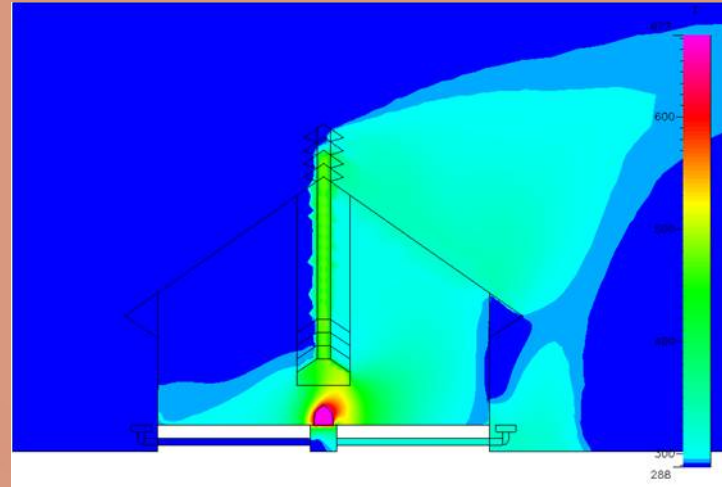
Indonesian Post-Disaster



Job Shadowing/Engaged/Experiential



Global Research Collaboration



**Suryabrata, J., Ikaputra, I. Indrayadi, I., Cowan, D. ,Rangel-Ruiz, R. (2007).
New Honai Design Prototype in Yakuimo, Papua: A CFD Simulation Study.
Journal of Architectural Engineering 13 (2), 64-71.**

OUTLINE : RECAP



1. What is Global Design Studio?
2. The Design Continuum as a Structural Foundation for International Collaborations
3. Specific Site Applications:
Post- Disaster: Bantul, Java, Indonesia
Broadmoor/Algiers Communities: New Orleans, LA



jancowa@iupui.edu

