

# INTERNATIONALIZATION LAB

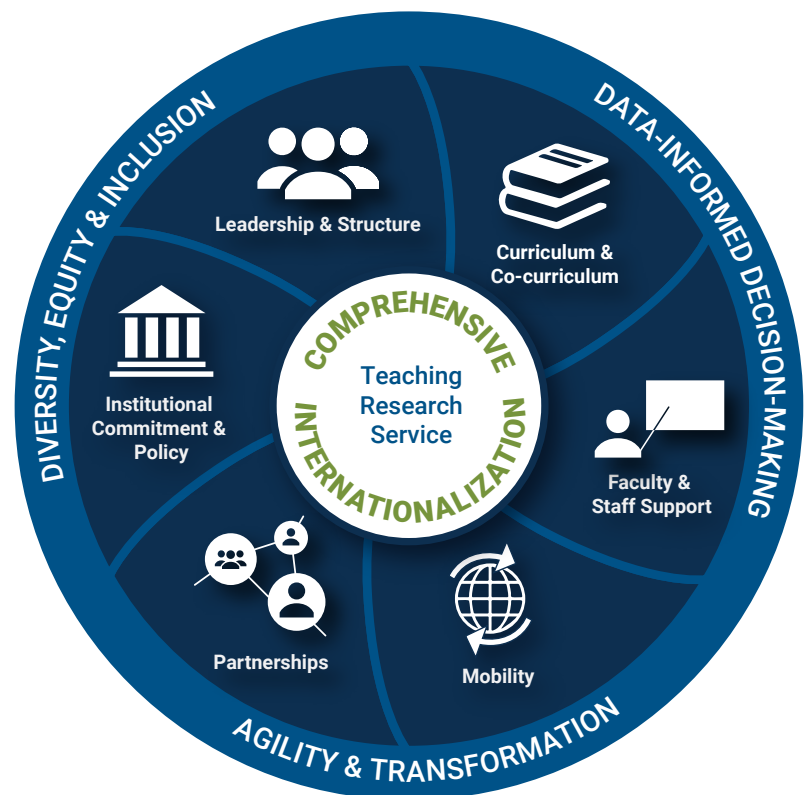
The ACE Internationalization Laboratory is a collaborative, inclusive learning community led by a team of internationalization experts with a wide range of backgrounds and experience that supports institutions in developing capacity, agility, and strategic vision for equitable comprehensive internationalization.

## BENEFITS

- Focus on equity-minded leadership, data-informed decision-making, agility, and transformation.
- Work closely with and receive customized guidance from ACE internationalization experts throughout the program.
- Assemble an internationalization leadership team.
- Take stock of and analyze current global engagement across all institutional areas.
- Formulate a strategic action plan to take internationalization efforts forward.
- Benefit from outside assessment and collaborative learning evaluation of your institution's current and intended internationalization practices and policies.
- Receive on-campus site visits by ACE staff and participate in three meetings of the entire Lab cohort, hosted by ACE in Washington, DC
- Access a wide array of resources on ACE Engage<sup>®</sup> and Internationalization Lab learning modules.

## ABOUT ACE'S MODEL

The ACE Model for Comprehensive Internationalization is a strategic, coordinated framework that seeks to align and integrate policies, programs, initiatives, and individuals to position colleges and universities to be more globally oriented and internationally connected.



## FOR MORE INFORMATION

Kara Godwin, Director of Internationalization | 617-610-0740 | kgodwin@acenet.edu | acenet.edu/ACELab

## LAUNCHED IN 2003, THE INTERNATIONALIZATION LABORATORY HAS INCLUDED THESE INSTITUTIONS:

### 2021-23

Augustana College (IL)  
Bentley University (MA)  
Bryant University (RI)  
Bucknell University (PA)  
College of Saint Benedict & Saint John's University (MN)  
Education New Zealand  
Louisiana State University  
Middle Tennessee State University  
Minnesota State University, Mankato  
Pomona College (CA)  
St. Norbert College (WI)  
University of Central Florida  
University of Nevada, Reno

### 2020-22

Albizu University (PR)  
Ball State University (IN)  
Baylor University (TX)  
California Lutheran University  
Fort Valley State University (GA)  
Jigjiga University (Ethiopia)  
Pratt Institute (NY)  
San Diego State University (CA)  
Southern Illinois University  
University of Kansas

### 2019-21

Bethany College (WV)  
California State University, San Bernardino  
Loyola Marymount University (CA)  
Mercer University (GA)  
Purdue University Northwest (IN)

Rhodes College (TN)  
Sinclair College (OH)  
Southern Illinois University  
State University of New York College at Brockport  
Universidade Federal de Goiás (Brazil)  
Universidade Estadual de Maringá (Brazil)  
Universidade Federal do Pará (Brazil)  
University of California, San Diego  
University of Delaware  
University of Missouri-Kansas City  
University of Nebraska-Lincoln  
University of North Georgia  
York College of Pennsylvania

### 2018-20

Albany State University (GA)  
Auburn University (AL)  
Florida Gulf Coast University  
Franklin & Marshall College (PA)  
George Mason University (VA)  
Holy Family University (PA)  
Monmouth College (IL)  
University of California, Santa Cruz  
University of Maryland, Baltimore  
University of Maryland, Baltimore County

### 2017-19

Arkansas Baptist College  
Clark Atlanta University (GA)  
Gallaudet University (DC)

Kent State University (OH)  
Southern Connecticut State University  
The University of Alabama-Tuscaloosa  
The University of Arizona  
Universidad El Bosque (Colombia)  
University of Nebraska Medical Center  
University of Wisconsin-La Crosse  
West Chester University (PA)

### 2016-18

Central Michigan University  
Inter American University of Puerto Rico-Barranquitas  
Lehigh University (PA)  
Loyola University Maryland  
Missouri University of Science and Technology  
Mount Saint Mary's University (CA)  
Northeast Ohio Medical University  
Old Dominion University (VA)  
Southeast Missouri State University  
Universidad Antonio Nariño (Colombia)  
University of Nebraska Omaha

### 2015-17

Brenau University (GA)  
Bridgewater State University (MA)  
California State University, Monterey Bay  
Fort Hays State University (KS)

Hofstra University (NY)  
Inter American University of Puerto Rico-Arecibo  
Inter American University of Puerto Rico-San German  
LaGuardia Community College of The City University of New York  
McMurry University (TX)  
Miami University (OH)  
Northern Illinois University  
Salisbury University (MD)  
Syracuse University (NY)

### 2014-16

Dominican University (CA)  
Eastern Washington University  
Grinnell College (IA)  
Holy Spirit University of Kaslik (Lebanon)  
LIM College (NY)  
New Jersey City University  
Queens College of The City University of New York  
Salem State University (MA)  
Southern University and A&M College (LA)  
University of Hawaii System and at West Oahu and Hilo  
University of Maryland, College Park  
University of Montana  
University of North Dakota

Earlier cohorts can be seen at [acenet.edu/labmembers](http://acenet.edu/labmembers).

**“This has been an invaluable process for Gallaudet and our community. As president, I’m pleased that we have a roadmap for our future with this work that was based on the leadership of so many.”**

**—Roberta J. “Bobbi” Cordano  
President, Gallaudet University**

